

# St. Erik Eye Hospital



# Eye hospitals in the world



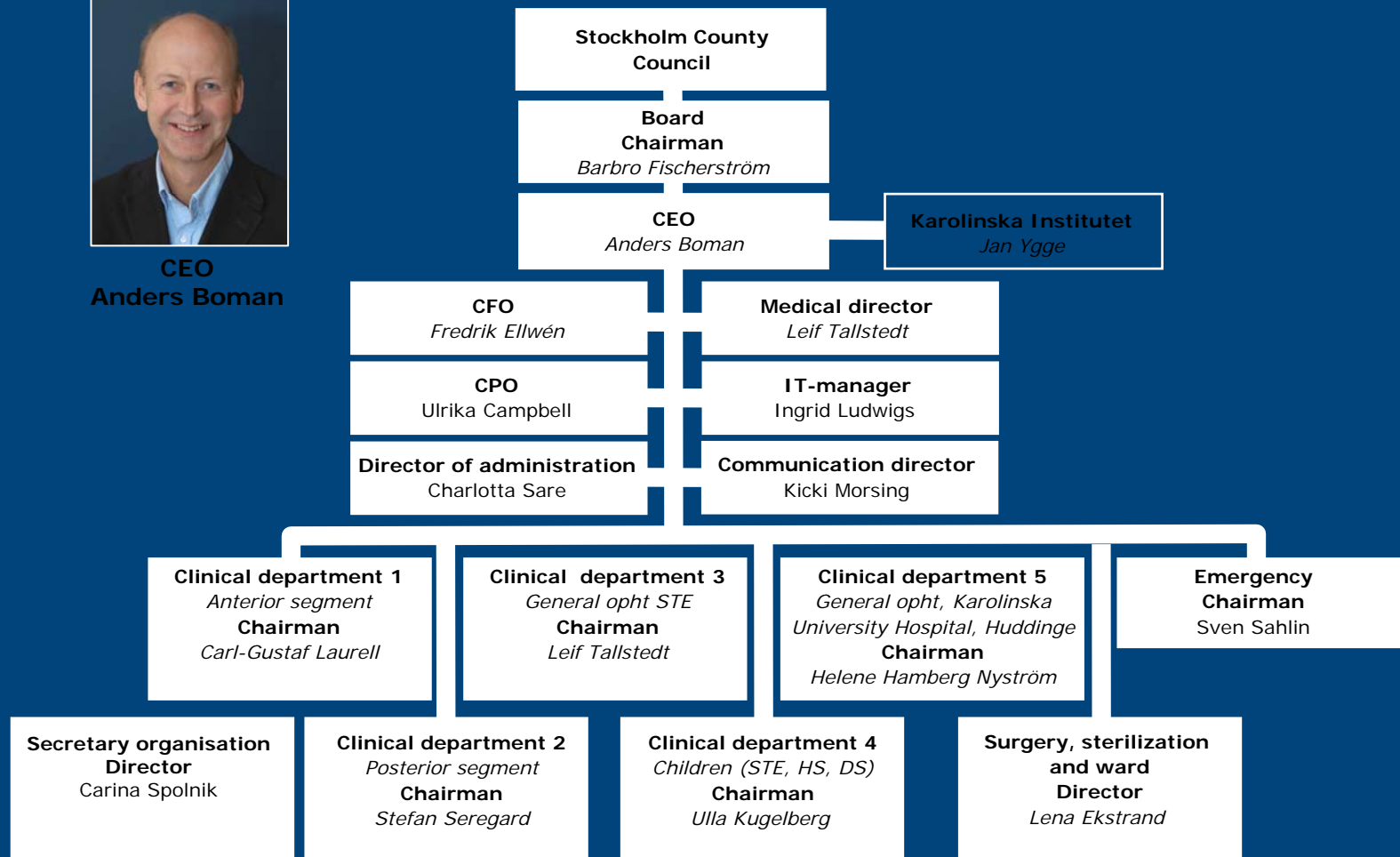
# St. Erik Eye Hospital

- Owned by the county council of Stockholm
- Founded in 1990
- It is a corporate since 2001
- Consolidation of three eye departments in the Stockholm area
- Number of beds down from more than 100 to 16
- Concentration of highly specialized surgery
- Concentration of research and education
- Emergency service day and night

# St. Erik Eye Hospital



**CEO**  
**Anders Boman**



# St. Erik Eye Hospital

## Human resources

- *360 employees*
- 65 Specialists
- 20 Residents, fellows
- 115 Nurses
- 65 Assistent Nurses
- 65 Secretary and technical support
- 30 Administration



# St. Erik Eye Hospital

## Key figures

- 10,000 operations
- 180,000 outpatient visits
- 1,500 inpatient visits
- 8,500 ambulatory operations



# Clinical department 1

## Anterior segment

Cataract surgery

Corneal surgery

Glaucoma surgery

Refractive surgery

Corneal disorders



**Chairman:  
Carl-Gustaf  
Laurell,  
associate  
professor**

# Clinical department 2

## Posterior segment and oncology

Vitreo-retinal surgery

Diabetes

Macular disorders

Oncology

Melanoma

Retinoblastoma



**Chairman:**  
**Stefan Seregard,**  
**professor**

# Clinical department 3

## General ophthalmology

Glaucoma

Oculoplastic surgery

Neuroophthalmology

Consultant service to  
other hospitals



**Chairman:  
Leif Tallstedt,  
associate  
professor**

# Clinical department 4

## Strabismus & pediatric services

Motility disorders

Inborn errors

Adults with motility  
disorders

Congenital cataracts

*Contact lenses*



**Chairman:**  
**Ulla Kugelberg,**  
associate  
professor

# Clinical department 5

*Karolinska University Hospital, Huddinge*

## General ophthalmology

Glaucoma

Diabetes

Cataract surgery

Consultation service

Transplantation Center



**Chairman:**  
**Helene**  
**Hamberg-Nyström**  
**associate**  
**professor**

# St. Erik Eye Hospital

## Emergency

28,000 visits

Triage Categorizing  
when patient arrives



**Chairman  
Sven Sahlin**

# St. Erik Eye Hospital

## Surgery

9 Operating Theatres  
10,000 operations  
2,800 under  
general anesthesia



**Activity manager:  
Lena Ekstrand**

# Research

## *Karolinska Institutet*



Two full Professors  
Four Ph.D. dissertations  
per year  
Teaching  
Medical students  
Optometrists  
Orthoptists  
Eye nurses



**Head professor:  
Jan Ygge**